



LIFE BIOBEST

LIFE-2021-PLP- LIFE Preparatory Project



Co-funded by
the European Union

Funded by the European Union. Views and opinions expressed are however those of the author(s) only and do not necessarily reflect those of the European Union or the CINEA - EC. Neither the European Union nor the granting authority can be held responsible for them.

ORGANIC MATTER, A CROSS-CUTTING RESOURCE

UN 2030 Agenda for SDG
European Green Deal
Zero Pollution Action Plan
Bioeconomy Strategy

Renewable Energy Directive
REPowerEU

Biodiversity Strategy
Nature Restoration Law

Farm to Fork Strategy
Soil Strategy - Soil Health Law
Nutrient Action Plan

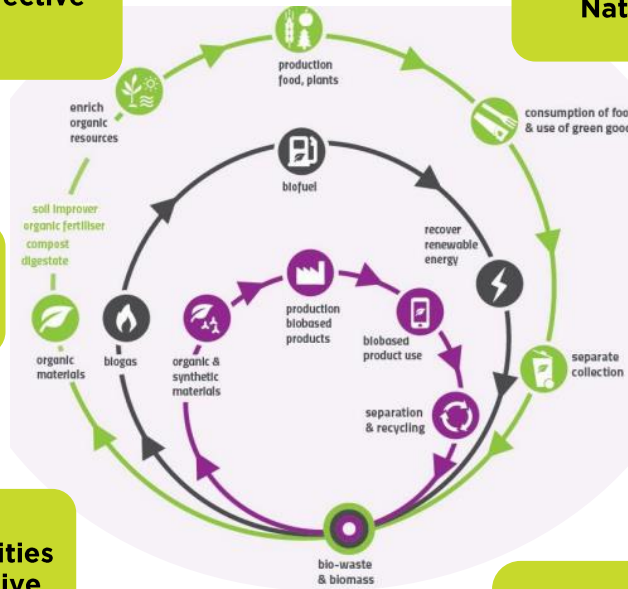
Communication on Sustainable
Carbon Cycles- Carbon
Farming Organic
Farming and Agriculture

Fertilising Product Regulation
Replace Non-renewable Growing
Media (such as extracted peat)

Waste Framework Directive
Food Losses & Food Waste Actions
Packaging Directive (bio-
base/compostable plastics)
Landfill Directive

Industrial Emissions
Directive- Treatment Facilities
Waste Incineration Directive

Sewage Sludge
Directive
Animal By-products Regulation



BACKGROUND. KEY DATA

- Recycling results in the EU:

5 tonnes of waste

is produced by the average European each year

Only 38%

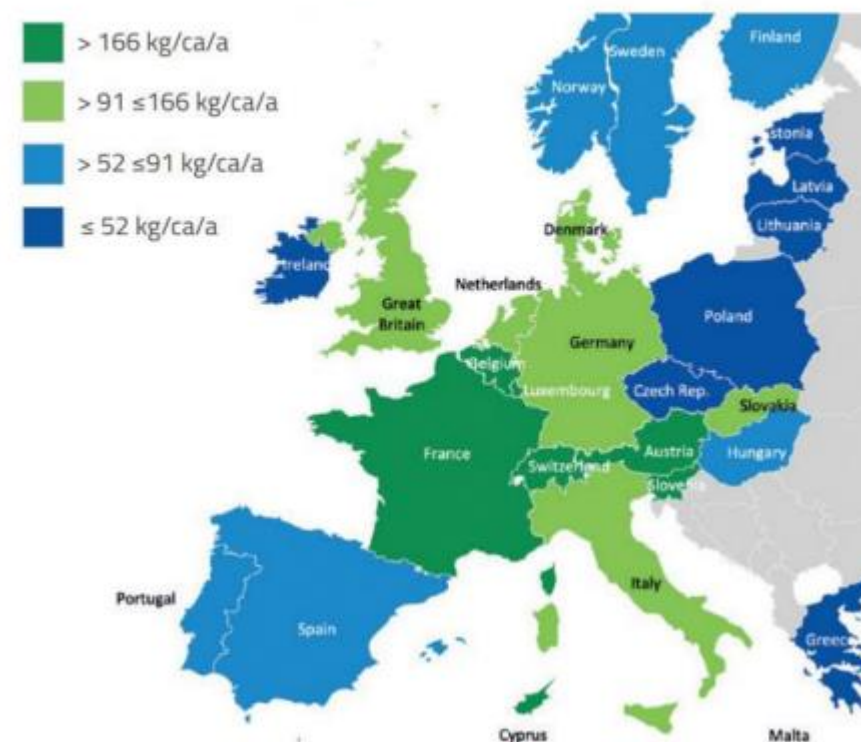
of waste in the EU is recycled

Over 60%

of household waste still goes to landfill in some EU countries

- Only **43% of municipal biowaste was collected separately**, while 57% of biowaste ended up in mixed municipal waste (EEA).
- 39 % of biowaste remains in residual waste** (UBA 2020).
- Out of the 60 M tpa of food waste generated in the EU in one year, **50 M tpa are not delivered to high-quality recycling** (ECN).
- To reach EU target to recycle 65% MSW by 2035, **extra 40 M tpa of municipal biowaste has to be separately collected** (ECN).
- Separate collection schemes mainly rely on the collection of green waste as some Member States **only collect the garden waste fraction of biowaste**.
- Need for improving the performance of **commercial activities**, big producers and private collection services.

BIO-WASTE COLLECTED PER CAPITA IN SELECTED COUNTRIES
GROUPED INTO QUARTILES
(kg/capita/annum)



Sources: ECN & EEA data. Excludes derived estimates

LIFE BIOBEST

Guiding the mainstreaming of best
biowaste recycling practices in Europe
2,5-year project, start date 1/1/23

CALL LIFE 2021-PREP-NATURA
NATURE AND BIODIVERSITY
PREPARATORY PROJECT



Preparing the basis for EU guidance and
standardization on closing the gap in the
biological cycle to enrich soils with high
quality compost from collected organic
waste in support of nature and
biodiversity



LIFE BIOBEST CONSORTIUM



Fundació ENT



ACR+

ACR+ (Association of cities and Regions)



CIC (Italian Composting and Biogas Association)



ECN (European Compost Network)



ZWE (Zero Waste Europe)

LIFE BIOBEST MAIN GOALS

Identification and validation of the current Best Practices (BP) and management instruments along the biowaste management chain (from generation to treatment) that bring about the production of quality compost and digestate and **establish series of reference Key Performing Indicators (KPI)**, based on the analysis of existing databases and experiences.

Interconnected co-creation meetings, working groups and networking activities with relevant experts and stakeholders of the sector **to validate the project outputs and provide solutions and strategies to overcome** the identified technical, regulatory, economic and environmental **barriers to widely adopt the proposed BPs.**

Comprehensive EU-wide guide, together with two decision-support tree guides for local and regional authorities to adapt biowaste management models to their specific context, offering **feasible BPs and management instruments to promote efficient collection** and subsequent recycling of (low impurities) biowaste into high quality compost and digestate.

Proposal for premium **European standards for biological waste entering composting and anaerobic digestion to promote the certification of these materials and treatments,** guaranteeing optimal management processes and a safe return to the soil.

LIFE BIOBEST MAIN POSITIVE IMPACTS



Availability of consolidated, structured and validated know-how and strategies for effectively closing the biological cycle & data management methodology



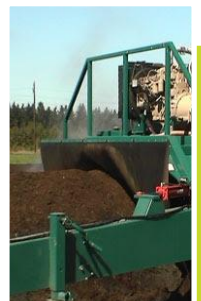
Reinforcement of the awareness and empowerment of target stakeholders to promote and implement BPs and instruments



Relevant contributions to strengthen the policy framework, regulations and certifications related to biowaste



Significant improvement of the collection and treatment systems, and consequently of the quantity and purity of the input material



More treatment efficiency and reduction of the process losses favoring the conversion of biowaste into high-quality compost and digestate



Other collateral positive cross-cutting impacts. Specifically closing the loop of organic matter, guaranteeing a safe return to the soil while minimizing any negative effect

Active network of entities and stakeholders and after life project actions to foster the sustainability, replication and exploitation of project results



LIFE BIOBEST RESULTS

- | **Front-runner and best practices factsheets**
- | **Guideline on separate collection**
- | **Guideline on governance and economic incentives**
- | **Guideline to promote quality compost and digestate**
- | **Two decision support trees (one for local and one for regional authorities)**
- | **Policy brief on regulatory and other barriers**
- | **BIOBEST Decision Support Web Tool**
- | **Standards for biowaste entering organic recycling processes**
- | **Comprehensive EU guidance for regional and local administrations**

LIFE BIOBEST NETWORK

**SUSTAINABILITY, REPLICATION AND
EXPLOITATION STRATEGY**

LIFE BIOBEST Consortium Current Network



LIFE BIOBEST Supporting Stakeholders



**Networking, Co-creation, Working Groups,
Mirror Groups, Front-runners Interaction**



**Dissemination & Communication: Capacity
Building Events, Events with Cities Implanting
Biowaste, Webinars Presenting BPs, Project
Final Event, Social Media, Web, etc.**



**Participation in External Policy Events,
Conferences, Networking with Related Projects
or Initiatives**



YOUR SUPPORT IS IMPORTANT FOR THE PROJECT

You could support LIFE BIOBEST by:

- | Sharing data on biowaste management
- | Sharing best practices or front-runner experiences
- | Participating in BIOBEST co-creation events, working groups, networking activities, etc.
- | Attending BIOBEST conferences and general events
- | Taking part in BIOBEST Network





THE BENEFITS YOU WILL GET:

- | Disseminate your experience and best practices
- | Learn about efficient biowaste management
- | Learn about best practices and front-runners
- | Exchange key information and knowledge
- | Connect to other stakeholders and entities
- | Get support from BIOBEST experts
- | Benefit from the project guidelines, reports and tools